

# SPECIALS

Kits for the connection, maintenance and protection of electrical systems.

## GALACTIC PROTECTION

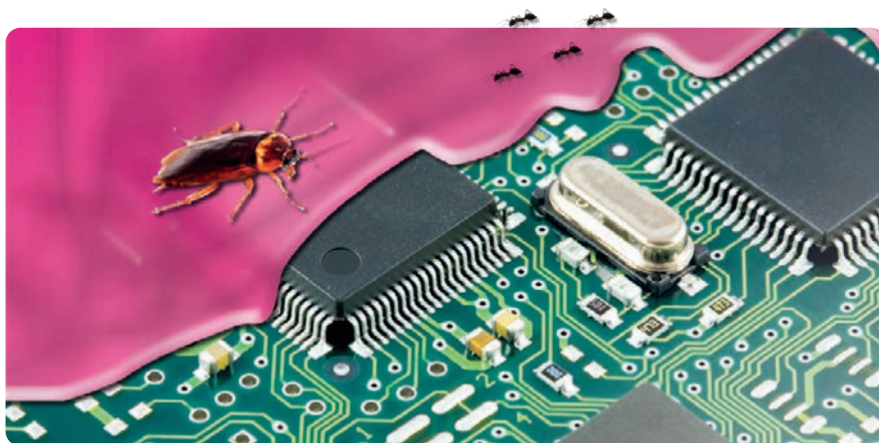
**Two-component rubber for printed circuit protection including against animal intrusion.**

Protection for printed circuits which are especially exposed to dust, animal intrusion (insects, snails, snakes, etc., e.g. in automatic gate trays). Opaque but slightly translucent allows cover forming a protective film. It can be removed (adheres without sticking) even on a small area to access the underlying component. The replaced component is then covered with new filler material which adheres perfectly to the previous material. Composed of two-component rubber with no shelf life and insulating and resistant to UV rays and ageing.



**Kit composition:**

One bottle for component (A+B)



PRODUCT / Item	Description	Rubber colour	Total quantity (ml)
GALACTIC PROTECTION GALACTIC-PROT	two-component rubber	●	300

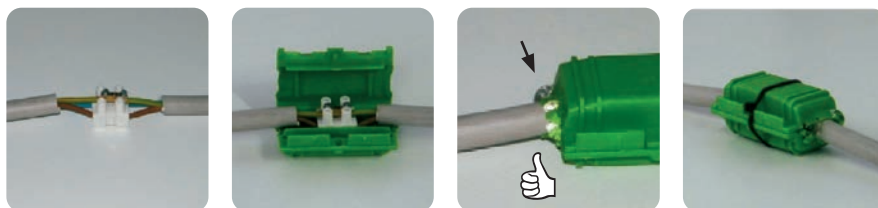
## GALACTIC MAMMUT SECURITY

Straight joint pre-filled with gel.

Galactic Mammut Security is an extremely compact accessory that is suitable for resolving insulation and sealing problems. Make reliable strip connector connections using the components found within the kit. Supplied with connectors for up to 3 core 4mm cables. Suitable for all types of domestic and industrial uses. Make safe temporary or uninsulated connections already in place. For quick repairs of damaged cable and extension cords. Suitable for outdoor use, in panels, within the kitchen etc. Non-toxic, no shelf life, easily re-enterable. Once closed the internal connectors are immediately protected. Galactic Mammut is essential in any area where water is present.

### ADVANTAGES

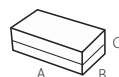
- No more tangled wires or uncovered connectors!
- A safe, reliable and quick solution *Galactic Mammut Security*.



### BEFORE



### AFTER



PRODUCT / Item	Cable formation	Dimension (mm)
<b>GALACTIC MAMMUT SECURITY</b> GALACTIC-MAM	Cables 3 x 1 to 4 mm <sup>2</sup> 3 insulated conductors with ground from 1 to 4 mm <sup>2</sup>	61 x 35 x 28



#### Package:

3-piece blister pack

#### Electrical performance:

CEI EN 50393 as applicable  
(testing under water head  
of the accessory installed in a box)





**Kit composition:**  
1 can for component (A+B)



## GALACTIC ANIMAL BARRIER

**Mouldable two-component rubber paste to prevent animal intrusion.**

Galactic Animal Barrier is a two-component paste with no shelf life that can be easily be moulded before cross linking is complete. It can be applied to entries to protect against intrusion (conduits, cable ducts and pipes etc). It cross links quickly to form an effective barrier against small insects however it is easily removable. Ideal for electric gate type installations.



PRODUCT / Item	Description	Rubber colour	Total quantity (g)
GALACTIC ANIMAL BARRIER GALACTIC-ANIBAR	two-component rubber	●	250

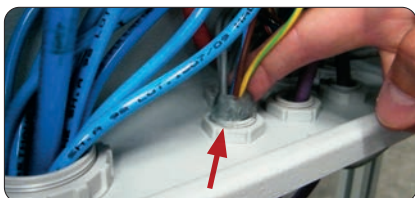
## GALACTIC WATER STOP

**Ready to use single component gel.**

The Galactic Water Stop single component gel is a soft, extremely sticky product supplied in convenient, ready to use packages: just tear open the quantity needed and place it at the entry point to protect from infiltration. Thanks to its stickiness, it provides stable and effective sealing over time. Easily removable and re-enterable, allowing repeated access to the protected component without leaving traces. Non-drip so it can also be installed vertically or on the ceiling. Highly sealant, lends itself to the insulation of small connections, or for the protection of particularly exposed connections (connections to external car battery terminals, etc.). This product can be applied wherever there may be leakages from pipes, corrugated pipes, channels, etc., or where there is a need for rapid and efficient insulation.



**Kit composition:** 2 cans, 100 g each



Corrugated pipe entry protection



Removal

PRODUCT / Item	Description	Gel colour	Package (g)
GALACTIC WATER STOP GALAWATERSTOP	single component gel	transparent	2 x 100

## SPECIALS

## RAY RTV

Fast cross linking two-component silicone rubber with high mechanical, thermal and elastic characteristics.

Ray-RTV cross links quickly at room temperature, transforming into a rubber with high mechanical, thermal and elastic characteristics. Available in single dose bags, bottles, tanks and boxes, in standard 30 Shore A hardness for black and 15 Shore A for pink. Fast cross linking (less than 8 minutes at 30°C) and easily re-enterable.

## ADVANTAGES

- Highly resistant, non-stick, insulating and sealing.
- No shelf life.

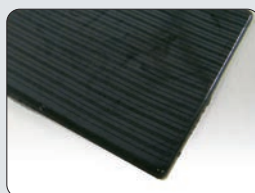
## Applications Examples



Glass sealing



Pit sealing



Rubber mats



Extruded profiles



Rubber gaskets



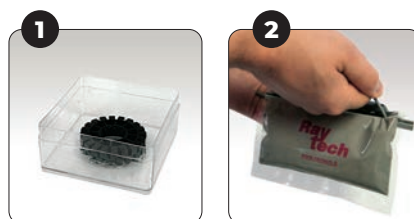
Profile reliefs



Anti-corrosion protection



Moulds for making models and for industry



In 15 minutes  
**Ray RTV**  
is ready!

PRODUCT / Item	Colour	Shore A hardness	Weight	Package type
<b>BAG-RTV 200-N</b> BAGRTV200-N	●	30	200 g	Single dose bag 
<b>BAG-RTV 350-N</b> BAGRTV350-N	●	30	350 g	Single dose bag 
<b>RAY-RTV 1000-N</b> RAYRTV1000-N	●	30	1000 g	Cans 
<b>RAY-RTV 10K-N</b> RAYRTV10K-N	●	30	10 kg	Boxes 
<b>RAY-RTV 20K-N</b> RAYRTV20K-N	●	30	20 kg	Boxes 
<b>RAY-RTV 400K-N</b> RAYRTV400K-N	●	30	400 kg	Boxes 

Other colours, hardness and cross linking times (pot life) are available upon request for tanks of 400 Kg. Ray-RTV is available in bags up to 600 g.

**Density:** about 1.24 gr/cm<sup>3</sup> (black)  
1.05 gr/cm<sup>3</sup> (pink)

**Cross linking:** (pot life) at + 30°C: <8 minutes

**Viscosity:** 4000-6000 max MPas

**Elongation at break:** 350 %

**Tensile strength:** 2,8 MPa

**Operating temperature:** -60°C / +200°C

**Overload temperature:** +250°C

**Thermal conductivity:** 0,2 W/m<sup>2</sup>K

**Dielectric strength:** >21 kV/mm

**Volume resistivity:** >1,5 x 10 exp 15 Ω cm



**Kit composition:**

1 mould for elastic washers, insulating gaskets and rubber profiles.

1 bottle for component (A+B).

**Advantages:**

Use directly on site, usable in all weather conditions, easy installation, easy separation from the moulds.

Note: max thickness: 3 mm.



Side A



Side B



## GASKET KIT

Kit to produce rubber gaskets and profiles.

Kit for the assembly of elastic washers, insulating gaskets and rubber profiles, UV resistant and anti-aging, with working temperature up to 200°C and 30 Shore A hardness, suitable for any electrical, plumbing, or sealing work. The articles produced are suitable for the sealing of outdoor lamps, for the sealing and insulation of screwed and bolted components, for any maintenance, replacement or shimming work. Easy to use, the liquid component is poured and the pieces are ready in minutes, at room temperature and with no exothermic reaction. Easily removed from the mould. Rapid cross-linking at room temperature (< 15 min). Elevated dielectric, mechanical, elastic and thermal properties.

- Without shelf life and re-enterable.
- Low emission of smoke and toxic and corrosive gases.
- Flexible and elastic over time.

### FLAT GASKETS

External Ø (mm)	Internal Ø (mm)
30	22
25,5	17
24	18
22	16,5
21	15
18	12
14	8
11	6
10	7
8	4

### RODS

Ø (mm)	L x L (mm)
30	130 x 6
25	130 x 5
20	130 x 4
15	130 x 3
10	130 x 2

### PROFILES

### GASKETS FOR TAPS

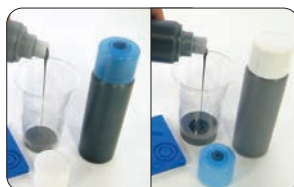
External Ø (mm)	Internal Ø (mm)
22	4,5
15,8	4,5
14	4,5

### ANTISLIP

L x L (mm)	L x L - Ø foro (mm)
30 x 30	30 x 30 - Ø foro 4,5
25 x 25	
20 x 20	
15 x 15	
10 x 10	

### CORRUGATED

### Installation sequence



Pour the 2 components in a 1:1 ratio in a jug and mix.



Pour the product into the desired mould (30 sec max).



Remove the object from the mould.

< 15 minutes at 23°C

PRODUCT / Item	Description	Rubber colour	Package (g)
Gasket Kit RAYGASKIT	Mould + Two-component liquid rubber	●	360



## SHINY SOLAR

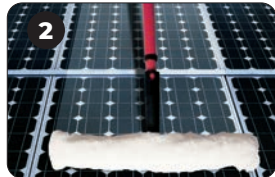
### Solution for solar and photovoltaic panel maintenance.

Shiny Solar is a product for photovoltaic and solar module maintenance, for easy removal of grease, limestone and crystallised deposits, dust, smog, excrement, etc. A photovoltaic panel can reduce generated power by up to 15% for non-polluted areas and 25% for highly polluted areas. Regular use of Solar Shiny keeps systems running efficiently. Extremely effective and easy to apply, with no shelf life. To maintain system efficiency, proceed with 2-3 applications/year for medium-polluted areas. The degreasing and anti-static protection contained in the product allows excellent results even with rinsing with hard water (even higher than 30°F). Rapid application: treatment of a 6 kW system (approximately 50 m<sup>2</sup>), thanks to the fact that degreasing, cleaning and application of the anti-static protection are all part of one single operation, requires less than 20 minutes. Shiny Solar respects panel components, the aluminium frame, gaskets and protective glass. A single package of Shiny Solar can treat installed photovoltaic panel power from 10 to 15 kW, equal to a surface of about 80-120 m<sup>2</sup>. The order data table shows the power and surfaces which can be treated with different packages.

- For easy removal of grease, limestone and crystallised deposits, dust, smog, excrement, etc.
- Contains anti-static protection.



Spray the product evenly on the solar or photovoltaic panel or on the surface to be cleaned and protected.



Let stand for a few minutes, depending on the level of dirt to be cleaned, then wipe with a soft, non-abrasive, slightly damp pad or sponge.



Rinse with water or remove product with a paper towel. Repeat for especially dirty surfaces.



PRODUCT / Item	Product contents	Efficiency (kW/ surfaces treated per package)	
		Power in kW	Surfaces (m <sup>2</sup> )
<b>Shiny Solar</b> SHINYSOLAR	750 ml	10 - 15	80 - 120
<b>Shiny Solar 5</b> SHINYSOLAR5	5 lt	70 - 100	530 - 800
<b>Shiny Solar 1000</b> SHINYSOLAR-1000	1000 lt	14.000 - 20.000	106.000 - 160.000
<b>Shiny Brush SB4</b> SHINYBRUSCH4	brush microfiber		



#### Advantages:

The 750 ml and 5 lt kits are supplied together with a professional sprayer, with an adjustable spray jet nozzle with a range in the latter case of up to 3 m.

For proper application of the product even in hard to reach areas, a microfiber brush mounted on a telescopic arm which projects up to 4 m is available.



Shiny Brush  
SB4