

HEAT-SHRINK

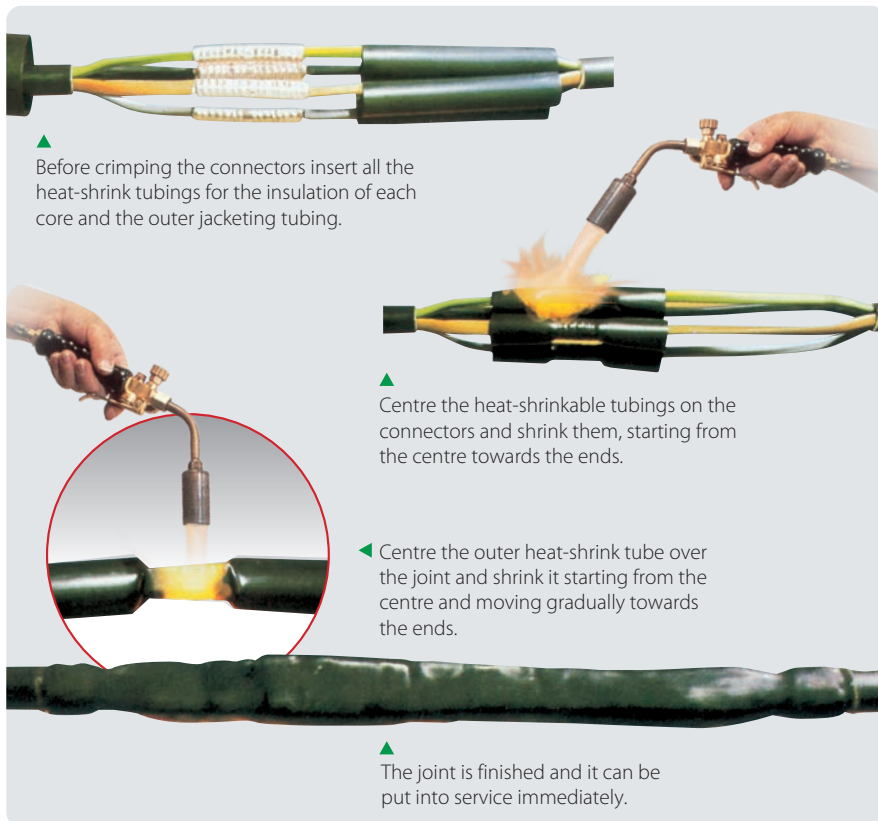
Straight or branch heat-shrinkable joints for extruded insulation cables up to a 1 kV.

Electrical performance:

- CEI EN 50393
with connectors complying
with EN 61238-1
- Class 2 in accordance with CEI 64-8.

 **Working temperature:** 90°

 **Installation temperature:** -15°C / +45°C



GDL

Joint for single core cables including concentric neutral.

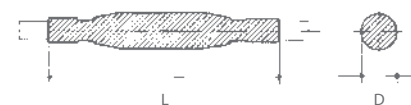
PRODUCT / Item	Conductor cross section mm ²		Dimension L (mm)
	from	to	
GDL 92 A1 224578-TEC	4	10	300
GDL 92 A2 945252-TEC	16	150	300
GDL 92 A3 935251-000	185	400	300
GDL 92 PA 210254-TEC	10	50	300



GLV

Joint for multi core cables (also for submersible pumps).

PRODUCT / Item	Conductor cross section mm ²		Number of phases	Dimension	
	from	to		L (mm)	D (mm)
GLV 0306 254656-TEC	1,5	6	3	250	18
GLV 0316 224477-TEC	10	16	3	400	37
GLV 0335 554268-TEC	25	35	3	550	43
GLV 0370 457896-TEC	50	70	3	650	52
GLV 3150 789992-000	95	150	3	800	65
GLV 3300 789994-000	185	300	3	900	82
GLV 0406 336598-TEC	1,5	6	4	250	20
GLV 0416 789890-000	10	16	4	400	40
GLV 0435 789891-000	25	35	4	650	45
GLV 0470 234477-TEC	50	70	4	650	54
GLV 4150 482979-000	95	150	4	800	67
GLV 4300 609695-000	185	300	4	900	84
GLV 2,5 - CP 411124-TEC	2,5 complete with connectors		4	300	15



For both copper and aluminium cables. For aerial, underground, submerged installation.

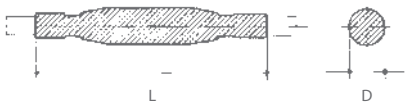
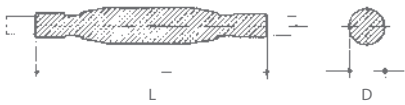
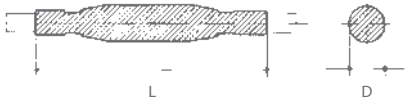
GLV-N

Joint for multi core cables with concentric neutral.

PRODUCT / Item	Conductor cross section mm ²		Number of phases	Dimension	
	from	to		L (mm)	D (mm)
GLV 0306 - N 788459-000	1,5	6	3	250	18
GLV 0316 - N 788429-000	10	16	3	400	37
GLV 0335 - N 788460-000	25	35	3	550	43
GLV 0370 - N 788461-000	50	70	3	650	52
GLV 3150 - N 788462-000	95	150	3	800	65
GLV 3300 - N 210054-TEC	185	300	3	900	82
GLV 0406 - N 789995-000	1,5	6	4	250	20
GLV 0416 - N 789996-000	10	16	4	400	40
GLV 0435 - N 789997-000	25	35	4	650	45
GLV 0470 - N 789998-000	50	70	4	650	54
GLV 4150 - N 405718-000	95	150	4	800	67
GLV 4300 - N 788463-000	185	300	4	900	84



These kits include components for the phase insulation, metallic braiding to replace the neutral and external self-sealing heat-shrinkable tube.



GLV-ARM

Joint for armoured multi core cables.

For armoured tape cables		Conductor cross section (mm ²)		Dimension	
PRODUCT / Item		from	to	L (mm)	D (mm)
GLV 0406-ARM	788969-000	1,5	6	300	25
GLV 0416-ARM	307689-000	6	16	400	40
GLV 0450-ARM	630855-000	25	50	800	60
GLV 4150-ARM	378703-000	70	150	1000	100
GLV 4300-ARM	152410-000	185	300	1000	120

BOPA

Joint for MV cables for public lighting.

PRODUCT / Item	Operating voltage kV	Number of phases	Section (mm ²)	Dimension	
				L (mm)	D (mm)
BOPA 3 BOPA3-TEC	3	1	1x10	300	50
BOPA 4 BOPA4-TEC	3	2	2x10	450	60
BOPA 5 BOPA5-TEC	3	3	3x10	450	70
BOPA 3/2 BOPA3/2-TEC	3,6	1 + concentric neutral	1 x 6 + 6 concentric	700	35
BOPA 4/T transition 784472-TEC	3	2	2,5 - 10 paper / 10 - 50 extruded	750	40

DJ

LV branch joint.

PRODUCT / Item	Single core cables cross section (mm ²)		Multi core cables cross section (mm ²)		Dimension	
	Through	Branch	Through	Branch	L (mm)	D (mm)
DJ01 416127-000	1 x 4 - 50	1 x 2,5 - 50	4 x 1,5 - 10	2 x 1,5	200	25
DJ02 396633-000	1 x 50 - 120	1 x 6 - 120	4 x 16 - 25 2 single core cables 1 x 6 - 50	2 x 1,5 1 two core cable 2 x 2,5	250	40
DJ03 396634-000	1 x 150 - 300	1 x 6 - 300	4 x 25 - 3,5 x 50	4 x 2,5 - 25	400	70

GLV SYSTEM FAST RP

Straight joint + Shear bolt connectors.

PRODUCT / Item		Cable formation 4x (n° x mm ²)	Dimension L x D (mm)
GLV 0435- RP/16	GLV0435RP16	6 - 16	650 x 50
GLV 0470- RP/35	GLV0470RP35	25 - 35	650 x 70
GLV 0470- RP/50	GLV0470RP50	25 - 50	650 x 75
GLV 4150- RP/150	GLV4150RP150	50 - 150	800 x 80

GLV F/R - GMP F/R

Joint for flame resistant cables (0,6/1 kV).

For NAVAL TYPE POWER cables

UNARMoured	Cable formation (n° x mm ²)	L (mm)	ARMoured	Cable formation (n° x mm ²)	L (mm)
PRODUCT / Item			PRODUCT / Item		
GLV 4004-F/R GLV4004-F/R	4 x 1,5 - 4	300	GLV 4004-ARM-F/R GLV4004-ARM-F/R	4 x 1,5 - 4	400
GLV 4016-F/R GLV4016-F/R	4 x 6 - 16	300	GLV 4016-ARM-F/R GLV4016-ARM-F/R	4 x 6 - 16	400
GLV 4050-F/R GLV4050-F/R	4 x 25 - 50	400	GLV 4050-ARM-F/R GLV4050-ARM-F/R	4 x 25 - 50	500
GLV 4150-F/R GLV4150-F/R	4 x 70 - 150	500	GLV 4150-ARM-F/R GLV4150-ARM-F/R	4 x 70 - 150	750

For NAVAL TYPE signalling and control cables

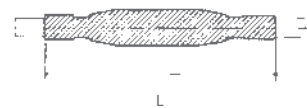
UNARMoured	Cable formation (n° x mm ²)	L (mm)	ARMoured	Cable formation (n° x mm ²)	L (mm)
PRODUCT / Item			PRODUCT / Item		
GMP 007-F/R GMP007-F/R	4 - 7 x 1,5 - 2,5	300	GMP 007-ARM-F/R GMP007-ARM-F/R	4 - 7 x 1,5 - 2,5	300
GMP 014-F/R GMP014-F/R	10 - 14 x 1,5 - 2,5	300	GMP 014-ARM-F/R GMP014-ARM-F/R	10 - 14 x 1,5 - 2,5	300
GMP 030-F/R GMP030-F/R	16 - 30 x 1,5 - 2,5	400	GMP 030-ARM-F/R GMP030-ARM-F/R	16 - 30 x 1,5 - 2,5	400

For UNDERGROUND POWER cables

UNARMoured	Cable formation (n° x mm ²)	L (mm)	ARMoured	Cable formation (n° x mm ²)	L (mm)
PRODUCT / Item			PRODUCT / Item		
GLV 4006-F/R-G7 GLV4006-F/R-G7	4 x 1,5 - 6	300	GLV 4006-ARM-F/R-G7 GLV4006-ARM-F/R-G7	4 x 1,5 - 6	400
GLV 4016-F/R-G7 GLV4016-F/R-G7	4 x 6 - 16	300	GLV 4016-ARM-F/R-G7 GLV4016-ARM-F/R-G7	4 x 6 - 16	400
GLV 4050-F/R-G7 GLV4050-F/R-G7	4 x 25 - 50	400	GLV 4050-ARM-F/R-G7 GLV4050-ARM-F/R-G7	4 x 25 - 50	500
GLV 4150-F/R-G7 GLV4150-F/R-G7	4 x 70 - 150	500	GLV 4150-ARM-F/R-G7 GLV4150-ARM-F/R-G7	4 x 70 - 150	750

For UNDERGROUND signalling and control cables

UNARMoured	Cable formation (n° x mm ²)	L (mm)	ARMoured	Cable formation (n° x mm ²)	L (mm)
PRODUCT / Item			PRODUCT / Item		
GMP 014-F/R-G7 GMP014-F/R-G7	Up to 14 x 1,5 - 2,5	300	GMP 014-ARM-F/R-G7 GMP014-ARM-F/R-G7	Up to 14 x 1,5 - 2,5	400
GMP 019-F/R-G7 GMP019-F/R-G7	Up to 19 x 1,5 - 2,5	400	GMP 019-ARM-F/R-G7 GMP019-ARM-F/R-G7	Up to 19 x 1,5 - 2,5	500



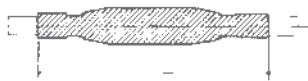
Electrical performance:

- CEI EN 50393
with connectors complying with EN 61238-1
- Class 2 in accordance with CEI 64-8.

No flame propagation:

IEC 60331-21 • CEI 20-36/2-1
(as applicable).

For other formations and cable sections please contact Raytech.



DJ F/R

Branch joint for flame resistant cables (0,6/1 kV).

For POWER cables

UNARMOURED		ARMOURED		Cable formation (n° x mm ²)		L (mm)
PRODUCT / Item		PRODUCT / Item		Through	Branch	
DJ 4016 - F/R DJ4016FR		DJ 4016 - ARM-F/R DJ4016-ARM-FR		3 - 4 x 1,5 - 16	3 - 4 x 1,5 - 16	300

GMP

Jointing kits for multi conductor cables for signalling, command and control.

NON ARMoured cable		N° of conductors		Section mm ²		External Ø of cable	
PRODUCT / Item		from	to	from	to	min (mm)	max (mm)
GMP 007	786768-000	4	7	1,0	2,5	8	19
GMP 014	666635-TEC	8	14	1,0	2,5	12	22
GMP 021	786272-000	15	21	1,0	2,5	15	27
GMP 040	786684-000	22	40	1,0	2,5	20	35
GMP 075	786683-000	41	75	1,0	2,5	26	44
GMP 100	786688-000	76	100	1,0	2,5	26	60

ARMoured cable		N° of conductors		Section mm ²		External Ø of cable	
PRODUCT / Item		from	to	from	to	min (mm)	max (mm)
GMP 007-A	786686-000	4	7	1,0	2,5	14	23
GMP 014-A	786687-000	8	14	1,0	2,5	15	26
GMP 021-A	786785-000	15	21	1,0	2,5	24	35
GMP 040-A	786356-000	22	40	1,0	2,5	30	45
GMP 075-A	786689-000	41	75	1,0	2,5	39	55

GMC

Jointing kits for multi pair cables for communication, command and control.

NON ARMoured cable		N° of pairs		Section mm ²		External Ø of cable	
PRODUCT / Item		from	to	from	to	min (mm)	max (mm)
GMC 010	939629-000	5	10	2 x 0,6	2 x 1,0	9	14
GMC 020	786828-000	11	20	2 x 0,6	2 x 1,0	13	20
GMC 030	946619-000	21	30	2 x 0,6	2 x 1,0	16	24
GMC 050	934676-000	31	50	2 x 0,6	2 x 1,0	22	29
GMC 100	156732-000	51	100	2 x 0,6	2 x 1,0	30	40

ARMoured cable		N° of pairs		Section mm ²		External Ø of cable	
PRODUCT / Item		from	to	from	to	min (mm)	max (mm)
GMC 004-A	802965-000	1	4	2 x 0,6	2 x 1,0	15	23
GMC 007-A	786769-000	5	7	2 x 0,6	2 x 1,0	15	26
GMC 019-A	803162-000	8	19	2 x 0,6	2 x 1,0	24	35
GMC 037-A	786412-000	20	37	2 x 0,6	2 x 1,0	30	45
GMC 061-A	786355-000	38	61	2 x 0,6	2 x 1,0	39	55