



TECHNO GEL GUM

Single bottle two-component insulation with very high dielectric, thermal and sealing characteristics. Waterproof and re-enterable!

TechnoGelGum is a strong hold flexible elastomer whose formula has been optimised for the protection of POWER CABLE, TELECOM CABLE and ELECTRONIC CIRCUIT connections. A new recipe that gives the product a surprising, original texture that combines the characteristics of GEL and RUBBER to emphasise its features. It's elastic and flexible like gel, but also tough and dry like rubber.

ADVANTAGES

- ▶ For installations up to 1 kV, suitable for high temperatures.
- ▶ Suitable for installation in salt water (sea) and in chlorinated water (pools).
- ▶ For any type of indoor / outdoor and even submerged installation.
- ▶ Waterproof > 1 MPa.
- ▶ Vibration resistant can act as a damper.
- ▶ Removable.
- ▶ The gel is not-classified as hazardous under the CLP Directive.
- ▶ No shelf life.

Dielectric strength:

>20 kV/mm

Cross linking time:

fast (about 10 min. at 25°C)

Volume resistivity:

>2 . 10¹⁴ Ω cm

Operating temperature:

-60°C / +200°C

Overload temperature for short periods:

up to 250°C

Stabilised for:

mould - UV

Degree of protection:

IP68 (in proper casings)

Techno Gel Gum protects against dust and seals the connections from the effects of continuous immersion in water when it is poured into casings protected from the ingress of solid bodies, thus helping to create a **IP68** system.

IP68
OFFICIALLY
TESTED | **IMQ**



STRONG CONSISTENCY

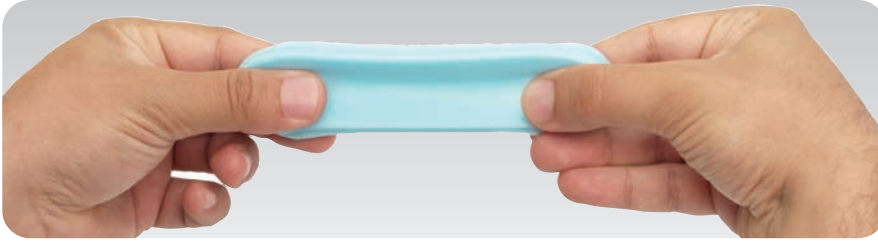
**EXTREMELY FLEXIBLE
AND WATER-REPELLENT**



FILLERS

FLEXIBLE like GEL

STRONG like RUBBER



SAFE



WATERPROOF



RE-ENTERABLE



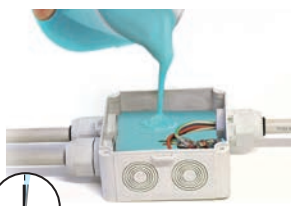
Shake before using.



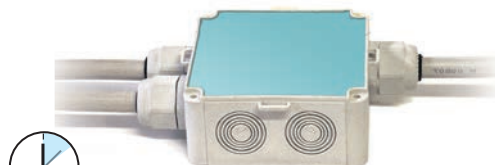
Pour TechnoGelGum into the provided jug in a 1:1 ratio.



Mix for 1 min. max.



Pour within 1 min. max.



In just 10 minutes the curing is completed.

PRODUCT / Item	Colour	Package type	Total quantity
TECHNO GEL GUM 500 TEGELGUM500	●	1 single, two-component bottle 1 jug - 1 spatula in wood	500 gr
TECHNO GEL GUM TEGELGUM	●	1 single, two-component bottle 1 jug - 1 spatula in wood	1 kg

