



warm up

Ceiling heating panels

Heat where you want it, when you want it



The ideal solution for all low thermal comfort environments





Warm Up

Ceiling heating panels

WARM-UP ceiling heating panels by Raytech can be installed invisibly and built into the ceiling of any home, office, showroom, workshop, greenhouse, camper vans etc., maximising space and freeing up wall space. Their positioning does not require any invasive procedures on the walls of the room, and their electrical connection is extremely simple. They can be installed, possibly placing them at the points where maximum thermal efficiency is required, with any mounting system: hung with chains, flush mounted, or recessed in false ceilings, always easily and quickly. The type of heating, based on infrared radiation, which makes it similar to solar radiation, is safe and unharmed, quick, efficient and extremely comfortable.

Why choose the Warm-Up System?

- It is installed without requiring any invasive procedures to be carried out on the structures of the house.
- It is easily uninstalled for re-use in another context.
- Its radiated heat is safe, with no air movement, and does not dirty the walls and room.
- It is used for primary heating and for secondary heating as an integrative system, and optimises and reduces heating costs thanks to the RID-WL thermostat.

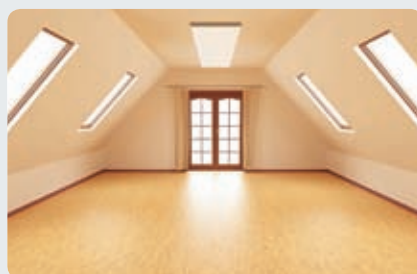
An ideally integrated invisible system that can also be decorative!



VERANDAS



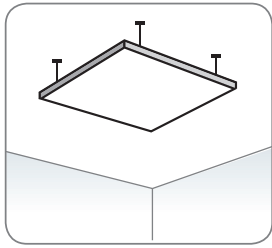
PREFABRICATED BUILDINGS



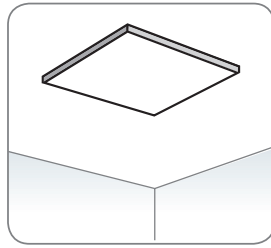
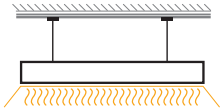
EXHIBITION SPACES



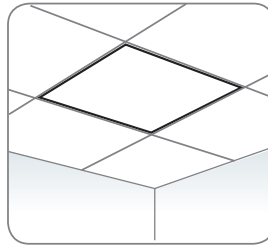
GAZEBOS



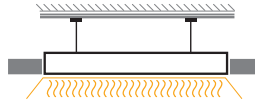
SUSPENDED



FIXED



ENCASED



Controlled by a timed thermostat or a power regulator, they reduce consumption to a minimum

Class 2
degree of protection IP44

Power required for comfort heating:
about 60W/m²
(one Warm Up 1 panel every 5m²)

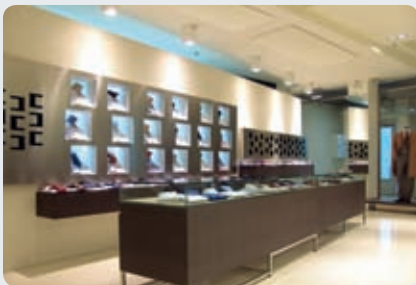
For primary heating with well-insulated walls:
about 120W/m²

What Are the Benefits to the System compared to others?

- Heating is immediate, in just a few minutes.
- It leaves room walls free because it is installed on the ceiling, flush mounted or recessed in false ceilings.
- It does not pollute, as it does not use gas or hydrocarbons.
- It optimises heating and reduces costs.
- Unlike other types of heating systems, it does not require maintenance!
- It uses the energy produced by photovoltaic systems, reducing heating costs.
- It can be coloured, and is therefore easily camouflaged or used as a decorative element.



Product	Color	Power	Dimensions (mm)
Warm Up 1	White, Paintable	300 W	590 x 590 x 40
Warm Up 2		600 W	1190 x 590 x 40



STORES



OFFICES



WAREHOUSES - GARAGES



HOMES



Warm Up accessories

RID-WL

Digital wireless timed thermostat



- Temperature accuracy:** 0,1°C
- Field of operation:** from 0°C to +40°C
- Field of temperature:** from 5°C to +35°C
- Power supply:** 2 AAA 1.5 V batteries
- Degree of protection:** IP30
- Frequency:** 868 MHz
- Powered receiver:** 230 V, 50 Hz
- Relay range:** 16 A
- Range in distance:**
100 m outdoors, 30 m indoors

Programmable in 30 minute blocks
 9 pre-installed programmes and
 4 user-set programmes
 "Self-learning" temperature control
 Child lock
 Low battery alarm
 Unlimited programme memory
 in the case of discharged batteries

Raytech has established the innovative WIRELESS RID-WL TIMED ROOM THERMOSTAT for maximum efficiency and speed and ease of installation. This system combines well-known reliability and control of environmental parameters of the system RID with a wireless connection.

The RID-WL, which operates in radio frequency, allows non-invasive installation in any environment, both for new installations and those related to renovations, or to reinforce an existing primary system.

The RID-WL is coupled with its own receiver, tuned to the frequency of its own thermostat (exclusive signal), which is able to control an ampacity of 16 A.

RID-WL, since it is not wired, it can be moved within the range of use and positioned where controlling the parameters is important.

It is equipped with an easy to read backlit LCD screen and is programmable and provided with a built-in internal sensor, but can be connected to a separate sensor, for example on the floor.

Product	Description
RID-WL	Timed thermostat including receiver

Additional relay device

Additional relay device, with a maximum of 6 devices which can be controlled by the same RID-WL timed thermostat



- Degree of protection:** IP30
- Frequency:** 868 MHz
- Powered receiver:**
230 V, 50 Hz
- Relay range:** 8 A
- Range in distance:**
100 m outdoors, 30 m indoors

Product	Description
RID-WL-R	Additional receiver for loads greater than 8 A