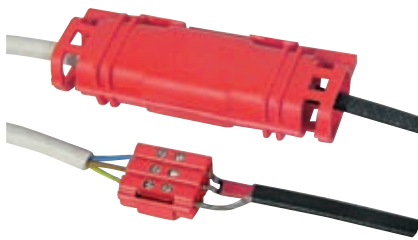


Accessories

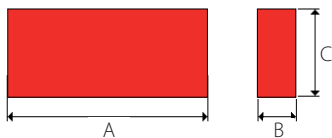


Electrical:

EN 50393 and CEI 20-33
(Note: with testing under water head and water between the cable cores),
in Class 2

Flame non propagation:

IEC 60332-1 and HD 405-1 (as applicable)



MCA Universal

Universal accessory for heating cable

A revolutionary accessory is now available that is suitable for any type of self regulating heating cable either with or without screening. Its versatility provides a reliable unique solution unavailable elsewhere in the market. It has no shelf life and no tools are required during installation (including blow torches).

- Versatile and ready to use
 - No need for tools
 - Without heating
 - Installable at any temperature
 - Can be used directly underground
 - Very compact
 - Re-enterable
 - Non toxic and flame retarded
 - The connections are automatically blocked when the joint is closed
- Screw connectors available with the kit
 - Also for underwater use
 - Without shelf life
- It allows to realize**
- Connection to the power cable, integrated to the terminal box
 - Pot ends
 - Joints between heating cables
 - Branch joint

Product	Kit Composition	Dimension A x B x C (mm)
MCA Universal	3 screw connectors to connect to the power cable or other heating cables	150 x 30 x 56



Connection termination to the power cable



Pot end



Straight joint between Heating cables



Branch joint

MCA-PC, MCA-PC-Compact

Connection kit

Supply side termination allowing connections to a terminal box. Made of cold-shrink components and also a dedicated cable gland. One for each cable.



MCA-PM, MCA-PM-Compact

Termination kit

For insulating and matching the cable ends. Made from cold-shrink components. One kit for each termination.



MCA-AL

Thermal insulation pass-through

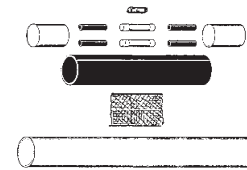
It allows the cable to pass through the metallic covering of the thermal insulation, avoiding abrasions and the moisture or water entry under the covering. It contains cable gland and fixing plate. One kit for each cable.



MCA-GL

Joint kit

To joint cable ends or to repair damaged cables. It contains all the components required, including connectors. One kit for each cable.



MCA-PRESS

Cable gland

To allow the cable to enter in boxes, to pass through walls etc. One kit per cable.

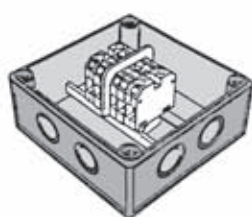




MCA-SUP

Support device for gutters and down pipes

It supports and fixes the cable in gutters and downpipes. In large gutters, requiring 2 cables laid longitudinally, it maintains the cable at the right distance.



MCA-SG

Box

Box with IP55 degree of protection, complete of terminals. It allows the entry of 1 or more heating cables, or to branch a cable from a main tracing, or to joint cable lengths. Cables inside the box shall be MCA-PC terminated.



MCA-FV

Glass fiber tape

To fix the cable to the pipe, 3 turns every 0,3 m of pipe. Self adhesive, in 50 m rolls.



MCA-ALL25 - MCA-ALL75

Aluminium self adhesive tape 25 or 75 mm width

For cable fixing, in 50 m rolls.



GUAT 26

Connection kit for classified area



MCA-EA

Warning label

To be applied for warning over traced items.

Control Unit C2000

C 2000 Control unit for temperature and humidity

The C2000 control unit and relative sensors are suitable for the tracing with both self-regulating cables and constant power cables. The unit allows you to power the system only when low temperatures and humid surfaces (snow - ice, etc.) are present simultaneously.

Segnalling lamps

ON (green) voltage

RELAY (red) cable on power

MOIST (red) humidity presence

TEMP (red) the temperature is lower than the fixed

Voltage: 230V c.a. +/- 10% 50/60Hz

Output: N° 1 relays

Switching capacity: 16A (3600 W)

Differential ON/OFF: 0,4°C

Temperature Range: 0-10°C

After run time: 1-6 hours

Protection degree: IP20

Dimensions: 85 x 42 x 48,8 mm

Weight: 252 gr

Room temperature: 0/50°C



C2000 - SR

Humidity and temperature sensor for ramps and stairs

Dimensions: h 32 mm - Ø 60 mm

Protection degree: IP68

Ambient temperature: -20°C / +70°C

Connecting cable: 6x1,5 mm², lenght. 10 m
(possible increase up to 200 m)



C2000 - SUG

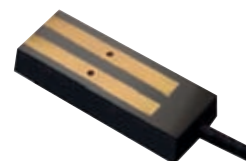
Ice and snow sensor for gutters

Dimensions: 105 x 30 x 10mm

Protection degree: IP68

Ambient temperature: -20°C / +70°C

Connecting cable: 4x1,5 mm², lenght.10 m
(possible increase up to 200 m)



C2000 - STG

Temperature sensor for gutters

Dimensions: 86 x 45 x 35 mm

Protection degree: IP55

Ambient temperature: -20°C / 70°C

Connecting cable: not included

